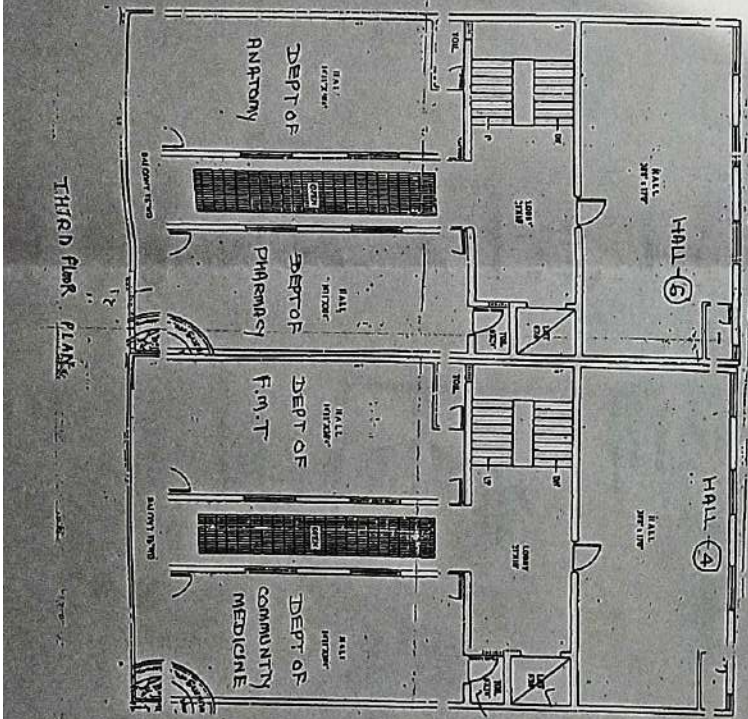
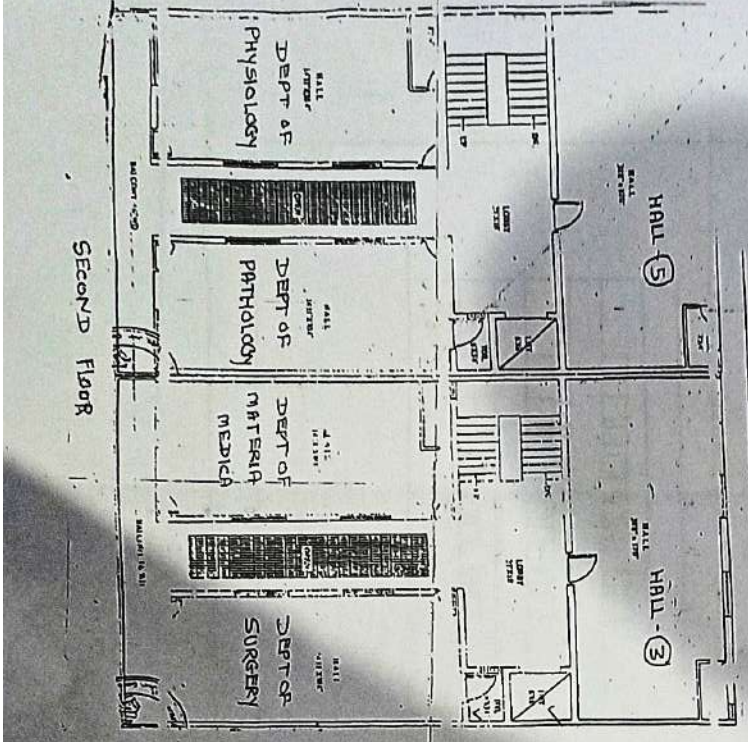
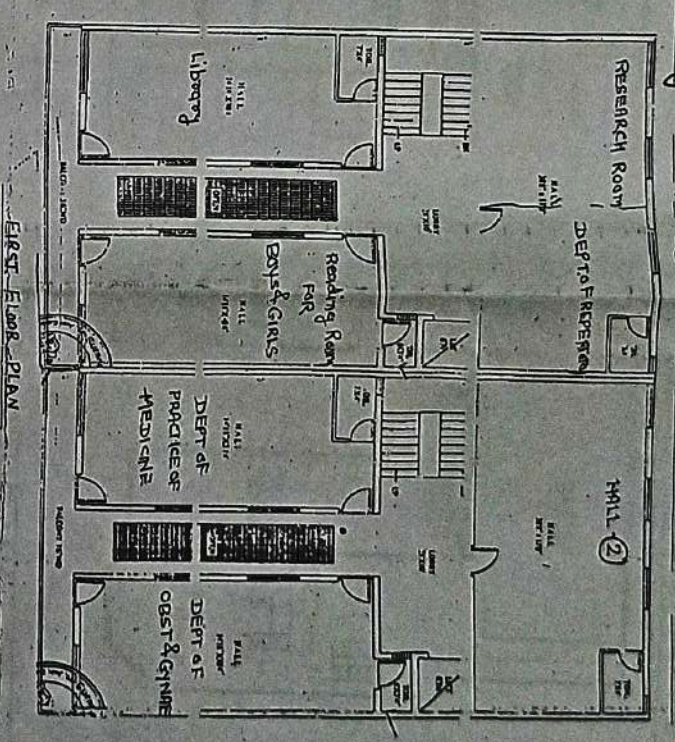
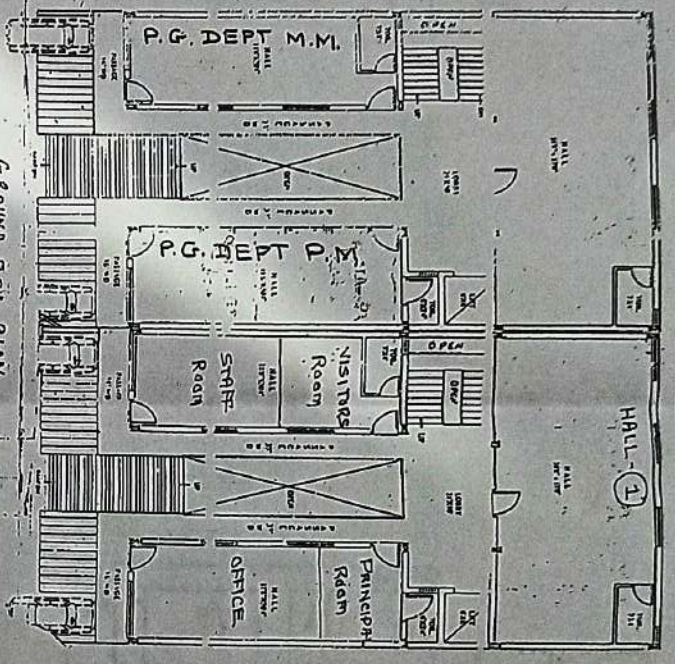
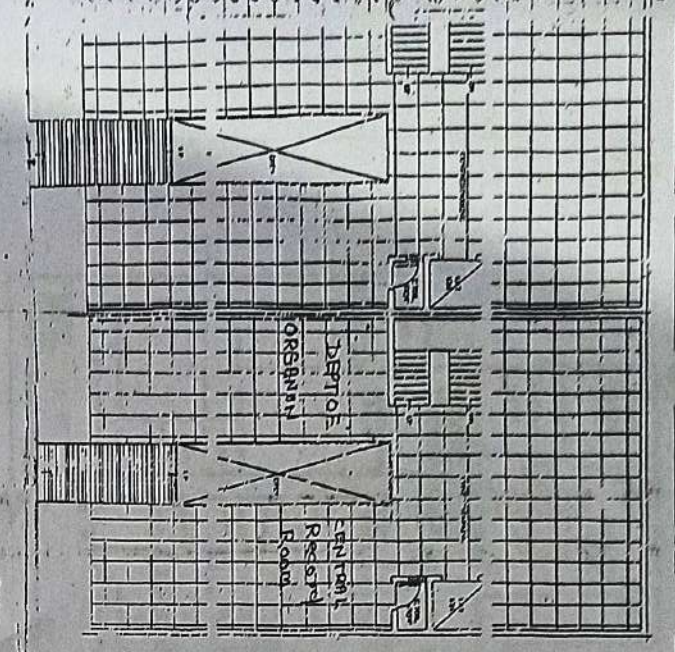


College Building MAP

MUSKOGEE-OR-H



PROJECT: PLAN OF DISTRICT HOMEOPATHIC MEDICAL COLLEGE AND HOSPITAL KANTAM ON PLOT NO. 55 & 56 AT KANTAM (M.P.)

Floor Size: 61' x 70' = 5600.00 SQ FT

Construction Area:

Lower Ground Floor: 4500.00 SQ FT

Ground Floor: 4500.00 SQ FT

First Floor: 4500.00 SQ FT

Second Floor: 4500.00 SQ FT

Third Floor: 4500.00 SQ FT

Total Construction Area: 22500.00 SQ FT

Prepared by:

Dr. G. S. Srinivas

Dr. P. (Srinivas)



PRINCIPAL
DISTRICT HOSPITAL
Medical College & Hospital

